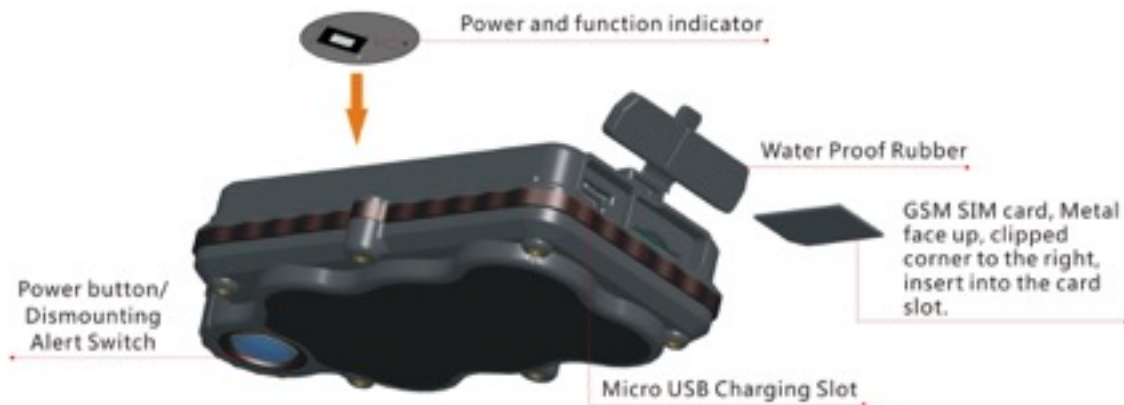


TK SERIES USER GUIDE

1. Product Image



Content of the packaging

- Tracking device
- Micro USB charging cable
- Screwdriver and screws
- User Guide

2. Installation Manual

2.1 SIM Card Pre-installation, specification note

- GSM Normal SIM Only
- SIM card should have its GPRS function enabled.
- SMS request will function only if Caller ID function is enabled.

2.2 SIM Card Installations and Removal

- Open waterproof rubber
- Insert SIM card into the SIM slot, metal face up, clipped corner to the right.
- Green light flashes once and turns to steadily on for 10 seconds, and then turns off.**
- Call the device SIM number and it is supposed to get through without answer. (if you are using a data SIM which is not supporting call function, ignore this step.)
- Ensure the waterproof rubber is closed after SIM installation

2.3 Device Installations

- Avoid all metal environment to make sure device is able to receive GSM and GPS signal.
- Avoid high temperature environment like above the car engine

3. Button Operation

We strongly recommend you to charge the product before using it the first time. And device will be automatically on once SIM is inserted. Please DO NOT PRESS ANY BUTTON when you use it for the first time.

3.1 Button Operation for GPS function

NOTE: "button" presses must be less than 2 seconds each in all uses

This blue control button is at the bottom of the device

- Power On:** Press control button 5 times. Green light flashes once and turns to steadily on for 10 seconds, and then turns off.
- Power Off:** Press control button 10 times. The blue indicating light will flash for 5 times
- Reset:** Press control button 15 times to reset all settings. The blue indicating light will flash for 3 times. Insert the SIM again and system will be on.
- Charge:** A red light is steadily on during charging and turns off when it is fully charged.

3.2 Panic Button

2 short presses and 1 long press on the control button will trigger a SOS alert to registered master number and will be uploaded to the server.

3.3 Drop Alert

System has equipped with a Drop Alert button. When device is mounted on metal surface over 1 minute, drop alert will be triggered. Master number will receive a SMS alert when device is removed. System default as On.

App User Guide

1. Tracking via website and applications

Tracking Website: www.miitown.com

QR Codes of IOS and Android app are at the bottom of the front page, please scan and download.

Username: Registered Master phone number.

Password: Default as 123456.

The image shows a web form with two input fields. The first field is labeled 'Username' and has a person icon on the left. The second field is labeled 'Password' and has a lock icon on the left and an eye icon on the right. Below the fields are two buttons: a grey 'Register' button and a blue 'Login' button.

2.1 Register an Account

2.1.1 Set APN

APN is Access Point Name. The correct APN must be set to enable the device to send data to the server. Different SIM has different APN, make sure you have confirmed the correct APN information with the SIM provider when you purchase the SIM

< Back Register

APN Setting >

User has to set APN to enable device connect GPRS network for data transfer. Please confirm the correct APN information with the Sim provider

Register Account >

Register master number. Device will be activated when master registration is done.
Please confirm APN correctly set.

Some APNs do not require user name and password.

APN

User name

Password

Submit

Table underneath is sample of the popular operator data. Please consult the website of your operator to find the APN settings of your SIM.

Operator	APN	Username	Password
KPN (NL)	internet	-	-
Orange (PL)	internet	internet	internet
T-Mobile (US)	internet2.vociestre.am.com	-	-
Vodafone (NZ)	www.vodafone.net.nz	-	-
O2 (DE)	internet	-	-
TIM (IT)	inbox.tim.it	-	-
Mobister (BE)	web.pro.be	mobistar	mobistar
AirTel (IN)	airtelgprs.com	-	-
Orange (FR)	orange.fr	orange	orange

Devices	
<input checked="" type="checkbox"/>	0024601402260074 0024601402260074
<input type="checkbox"/>	0024601402270074 0024601402270074
<input type="checkbox"/>	0024601402270081 0024601402270081

2.1.2 Registering Account

A. Make sure you put the land code before your phone number and you let out the first 0 of your number.

e.g.: +31612345676 for NL an +32475123456 for Belgium

B. 123456 is the default login password. And it can be change on the tracking website at

C. www.miitown.com

[Back](#) Register Account

Phone Number in the Device

+Country code Phone number

Master number is the only phone number controls the tracking device via SMS after registration. And it is also the login username of the tracking website and app.

Master Phone Number (Username)

+Country code Phone number

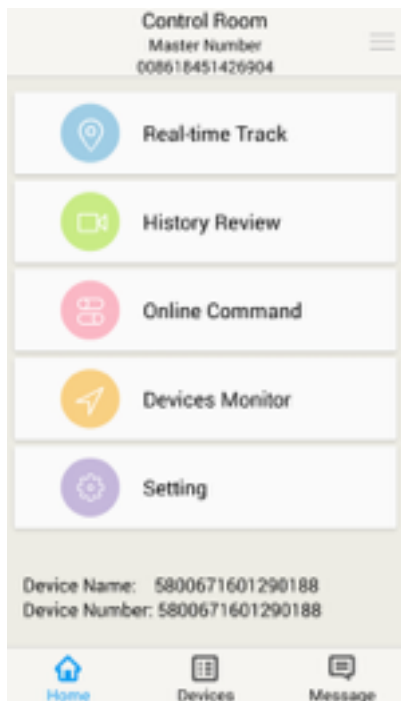
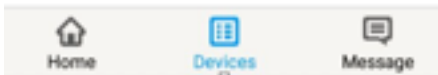
Password

123456

Confirm Password

123456

Submit



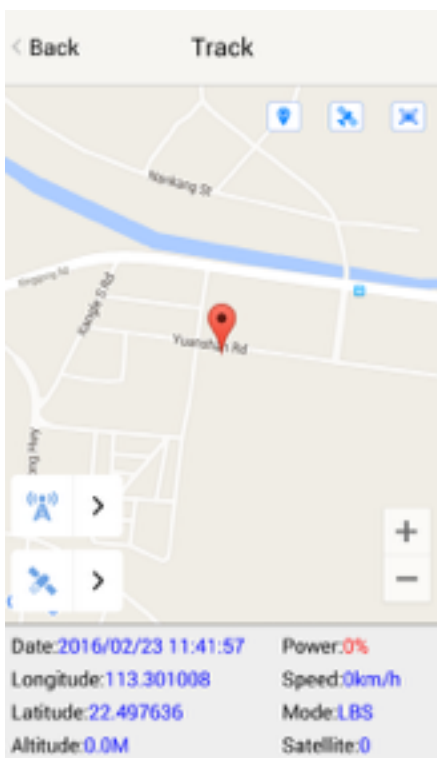
3. Control Room

Home

Function list of the app

Devices

Show all number devices under the same account. Tap the device's serial number to select the one you need to control.



3.1 Real-time Tracking

To get latest location of the device.



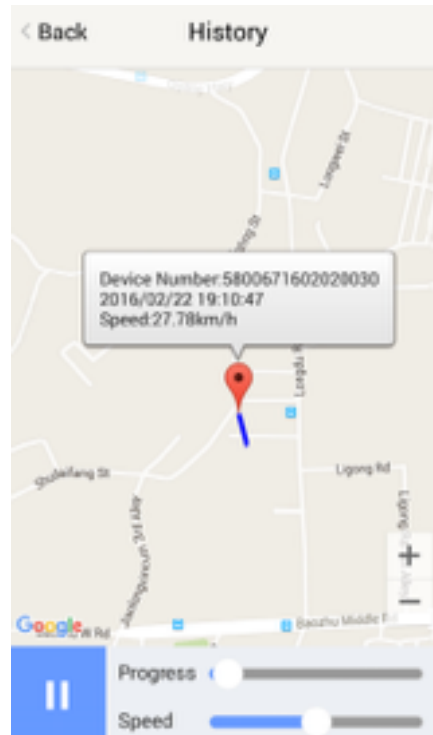
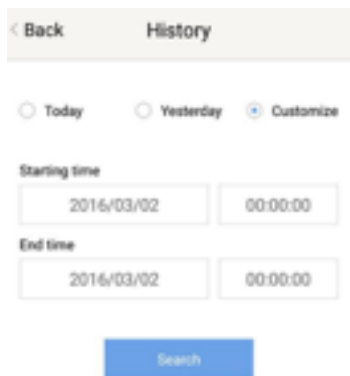
Tap to get GSM location



Tap to get GPS location

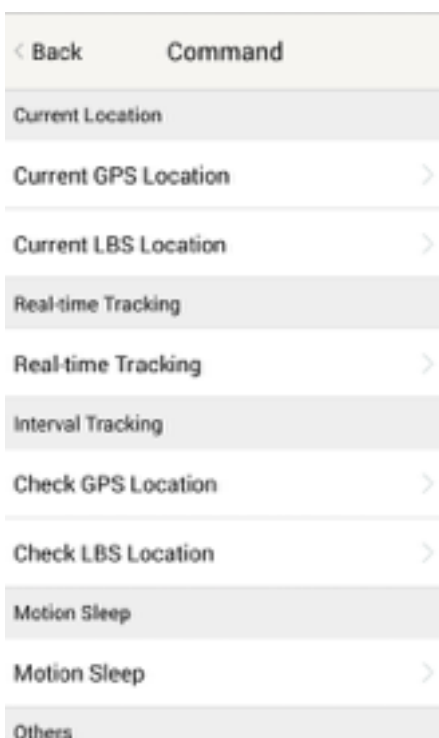
3.2 History Review

To view the previous location record of the selected device.



3.3 Online Command

Online Command can control device from APP via SMS, so SMS cost will be charged by the SIM provider of your smartphone, when you send these commands. And all replies from the device will be sent back to app via GPRS data, so replies will be shown as push notification, and all records can be checked in the message section.



3.3.1 Current GPS Location

To update the latest GPS location of the device. The latest location will be uploaded to website and app map.

3.3.2 Current LBS Location

To update the latest GSM location of the device. The latest location will be uploaded to website and app map.

3.3.3 Real-time Tracking

Enables device to upload 6 locations to server every minute when device is **in motion**.

3.3.4 Check GPS Location

Device will upload GPS location in appointed interval. **No matter device is in motion or not**. Default as 1GPS location uploads every 72 hours.

3.3.5 Check LBS Location

Device will upload GSM location in appointed interval. **No matter device is in motion or not**. Default as 1GSM location every 30 minutes.

Check LBS function is the best power saving tracking function, but distance inaccuracy could up to 1KM

3.3.6 Deep Sleep

Device will go to deep sleep mode and wake up after appointed interval, and will be stay awake for 12 minutes. If there is no new commands received in 12 minutes, device will go back to deep sleep mode for the next set interval.

The phone function will be off during deep sleep, and no call or SMS can be replied until device wakes up.

3.3.7 Motion Sleep

Device will go to deep sleep mode and wake up when motion is detected, and will be stay awake for 12 minutes.. If there is no new commands received in 12 minutes, device will go back to deep sleep mode until the next motion is detected.

The phone function will be off during deep sleep, and no call or SMS can be replied until device wakes up.

3.3.8 Others

3.3.8.1 Status Query

Check system status, replies will be shown in the message section

3.3.8.2 Device Information

Check software edition information and device's serial number. Replies will be shown in the message section.

3.4 Device Monitor

All devices will be shown in the latest location.

4. Panic Button

Power button is the panic button. If there is a SIM card inserted, 2 short presses and 1 long press to trigger SOS alert. Preset numbers will receive the following SOS SMS "SOS! HELP! SOS!! HELP!! SOS!!! HELP!!!" **System default as off.**

Note:

1. Interface of the App you download could be different from the screenshot in the user manual since it is kept updated.
2. Certain functions in APP might not support the models you purchase. Please check the following SMS Command Operation Guide to confirm detail functions list of your tracker.

SMS Commands Operating Guide

SMS commands are for non-smartphone user or who would like to control the device through SMS commands only, without using the App.

1. Registration

1.1 Set APN

APN is Access Point Name. The correct APN must be set to enable the device to send data to the server. Different SIMs have different APN, make sure you have confirmed the correct APN information with the SIM provider when you purchase the SIM.

Command

apn* APN's name*username* password

Some APN goes without username and password, you can just leave them blank.

Example: Orange France

APN: orange.fr

Username: orange

Password: orange

**Correct command format *apn*orange.fr*
orange*orange***

Example: China Union

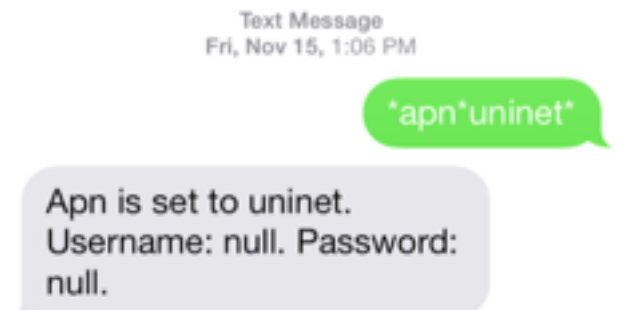
APN : uninet

Username: null

Password: null

Correct command format *apn*uninet*

Your cell phone will receive confirmation saying that the appointed APN is set (See screenshot).



1.2 Registering the “Master” Controller

- A. Use cellphone to send SMS ***master*123456*+country code plus your cellphone number*** to the device SIM number. 123456 is the default password, it can be changed by changing password command as showed on 1.3.

Example

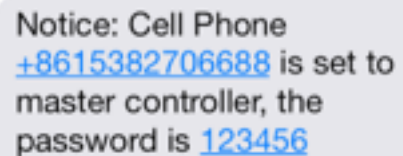
master*123456*+319876543210 (+31 refers to Netherlands country code, 9876543210 refers to the cell phone number)

- B. Once your cellphone receives the confirmation sms, it will become the only master phone to the tracker (See screenshot).



***master*123456*
+8615382706688***

NOTE: The device will **ONLY** listen and respond commands from this number unless you choose to turn on the multi controller function and open the device to any cell phone number.



Notice: Cell Phone
+8615382706688 is set to
master controller, the
password is **123456**

1.3 Changing the Password

SMS: *password*654321* (654321 refers to new password)

Changing password command has to be sent only from the master number. And new password has to be applied to when you need to register the device with a new master number.

2. Motion Alert

The motion alert enables device triggered a call/sms alert when motion is detected.

2.1 Set vibration sensitivity

There are 5 levels of the motion sensitivity. 1 being the most sensitive, 5 the least, default setting is 1.

SMS: *sensitive*1-5*

2.2 Set SMS/CALL Alert

There will be a Call/SMS alert send to master number when any motion is detected, after 3 minutes of non-movement. **The system default setting is call alert, and can be turned off by command.**

SMS: *alertoff*

To turn off motion alert function.

SMS: *smsalert*

To enable motion sms alert function.

SMS: *callalert*

To enable motion call alert function.

2.3 Period Continuous Motion Alert

System will enable the continuous motion alert function at appointed time periods, up to 3 time periods per day.

That means master number will receive the call/sms alerts continuously when device detects on continuous motion.

Time format need to be in military time.

System default set UTC time, if you are not in this timezone, please set your timezone before using this function.

SMS: *continuousalert*(2 digits start time)*(2 digits end time)*

Example

*continuousalert*08*14* means system will enable continuous motion alert function from 8am to 2pm.

SMS: *continuousalertoff*

To turn off period motion alert function.

3. Tracking via SMS

3.1 SMS: *locateaddress*

Master number will receive the GPS address of the device via SMS. If GPS location is invalid, device will reply the WiFi location, or the closest cell tower location instead.

3.2 SMS: *locatemap*

Master number will receive a Google map link. Click the link to view the map via cellphone browser. If GPS location is invalid, device will reply the map link of the WiFi location, or the closest cell tower location instead.

And this function is suitable for smart phone user only.

4. Tracking via website and applications

Tracking Website: www.miitown.com

ID: Registered Master phone number.

Password: Default as 123456.

It can be changed on the tracking website.

Recommended Web browsers are Chrome, Firefox or cell phone default browser.

4.1 Real-time Tracking (High Power Consumption)

Routetrack function enables device to upload 6 locations to server every minute when device is **in motion**.

4.1.1 Routetrack

SMS: *routetrack*1-99*

1-98 represents the number of hours that the routerack function works. 99 represents to turn the routetrack function always on.

Example

*routetrack*1* means uploading 6 location GPS data every minutes for 1 hour

4.1.1.1 Rsampling

Rsampling is to set routetrack data collecting interval.

The smaller interval, the higher accuracy, but the higher power consumption.

SMS: *rsampling*1-999*

1-999 represents seconds of data collecting interval, default as 10 seconds

4.1.1.2 Rupload

Rupload is to set routetrack data upload interval.

The smaller interval, the higher accuracy, but the higher power consumption.

SMS: *rupload*1-999*

60-999 represents seconds of data uploading interval, default as 60 seconds, **minimum rate should not be less than 60**

Example

*rsampling*30* plus *rupload*120* means 4 location data will be uploaded to server every 2 minutes when routetrack function is on.

SMS: *routetrackoff*

To turn off route track function.

4.2 Check GPS Location (Medium Power Consumption)

Check function enables device to upload GPS location in an appointed interval. If GPS location is invalid, system will upload the WiFi location, or the closest cell tower location instead.

SMS: *checkm*5-1800*

5-1800 represents the number of minutes that the device Check's data upload interval, **minimum rate should not be less than 5.**

Example

*checkm*360* means uploading WiFi/GPS data every 6 hours.

Noted:

1. Check function is able to work with routetrack and Checkgsm functions at the same time.
2. System is default as *checkm*4320*. 1 location will be uploaded to server every 72 hours.
3. Location will be uploaded to server **no matter device is in motion or not.**

4.3 Check WiFi/GSM Location (Low Power Consumption)

Checkgsm function enables device to upload ONLY the WIFI/GSM location in appointed interval of time. Data will be uploaded to server on both occasions, i.e, if the device is **in motion or not in motion**. If WiFi location is invalid, system will update the closest cell tower location instead.

And this function can be used with routetrack and Check function at the same time.

SMS: *checkgsm*5-1800*

5-1800 represents the the number of minutes of Checkgsm's data upload interval, **default as off**; rate should not be less than 5.

Example

*checkgsm*30* means uploading GSM data every 30 minutes.

4.4 Advanced Tracking

Advanced Tracker including appointed time tracking and appointed period tracking. System default as UTC time, timezone has to be set to use advanced tracking functions if device is not using in UTC timezone.

4.4.1 Timezone

SMS: *timezone*0-24*

Example

Italy= *timezone*2*

UK= *timezone*0*

Australia Perth = *timezone*8*

4.4.2 Appointed Time Tracking

To Check map location at appointed time, up to 3 time points per day. Device will stay in deep sleep mode except the appointed tracking time. Time format need to be in military time and can be set to every half hour.

SMS: *timinglocatemap*(appointed locating time)*

Example:

*timinglocatemap*0830*1400*1830* means master number will receive a text message with a google map link at 8:30am 2:00pm and 6:30pm, click the link to view the device location on goole map through your cellphone browser. It is suitable for smart phone user only.

SMS: *timinglocateoff*

To end timing locate function.

4.4.3 Period Tracking

Period Tracking is to enable the preset tracking function in appointed periods only, up to 3 time periods.

Device will stay in deep sleep mode except the appointed tracking period. Time format need to be in military time and can be set to every half hour.

SMS: *periodlocate*(8 digits locating period 1)*(8 digits locating period 2)*

Example

*periodlocate*08301100*14001830* means system will enable the tracking function during 8:30am-11:00am and 2:00pm-6:30pm of the day. 0830 and 1400 refers to the start time of the tracking period, 1100 and 1830 refers to the end time of the tracking period.

SMS: *periodlocateoff*

To ended period locate function.

3.4 Track Off

Track off will end all the tracking functions, including routetrack, checkm, checkgsm, timing locate and period locate.

SMS : *trackoff*

To turn off all tracking functions, including routetrack, check, checkgsm, timing locate and period locate.

5 Upload Alert

The upload alert function enables device upload alert status to the server including **motion alert, low battery alert** and **wire cut alert, drop alert** etc. User can check alert status on the tracking website or message section in app.

This function is default as ON.

SMS: *uploadalert*on*

To enabled upload alert function.

SMS: *uploadalert*off*

To disable upload alert function.

6 Online Control

The online command function enables device to connect with server for 15 minutes, and user will be able to send online command from the tracking website.

SMS: *onlineon*

To enabled online control function.

SMS: *onlineoff*

To end online control function.

7. Sleep Function (Lowest Power Consumption)

7.1 Interval Sleep

Device will go to deep sleep mode and wake up after appointed interval, and stay awake for 12 minutes. If there is no new commands received in 12 minutes, device will go back to deep sleep mode for the next set interval.

Note: System will shut down GPS and GSM module during deep sleep period, so no call or SMS can be received or responded.

SMS : ***sleep*1-99***

1-99 refers to the hours of appointed sleep interval.

Example

*sleep*6* means to enable device to go to deep sleep mode and wake up in every 6 hours.

7.2 Motion Sleep

Motion Sleep function enables device to stay in deep sleep mode and wakes up once motion is detected. System will upload the current location of the device. If motion continues, system will stay on and operate the previous tracking settings. If there is no further motion detected, device will go back to deep sleep in 12 minutes. And the circle repeats.

Note: System will shut down GPS and GSM module during deep sleep period, so no call or SMS can be received or responded.

SMS: ***sleepv***

To enable motion sleep function.

SMS: ***sleepoff***

To turn off motion sleep function.

8. WiFi Functions

WiFi function suitable for models support WiFi only. Please check your models number in Hardware Specification to confirm.

8.1 WiFi Fence

8.1.1 Set WiFi Fence

WiFi fence function enables device recognising the appointed WiFi router signal as a fence, similar to Geofence. Alerts will be triggered when device enters or exits fence. There are a few steps to setup a WiFi fence.

Step 1 SMS *wifilist*

Device will detect WiFi signal nearby and reply a list with wifi router names in orders.

Example 1. Apple's home. 2. Ken's office 3. Bear's Cafe

Step 2 SMS *wififence*#*

refers to the WiFi number in the WiFi list reply. And master number will receive a notice to confirm the appoint WiFi is set as the WiFi fence.

Example *wififence*2* means WiFi router in the name of Ken's Office will be set as a WiFi fence.

Step 3 SMS *wifichck*5-99*

5-99 refers to WiFi fence checking interval in minutes. System will check the set WiFi fences in appointed time interval. And corresponding alerts will be generated when device enters or exits the set WiFi fences.

Example *wifichck*5* means system will check set wifi fences in every 5 minutes.

8.1.2 Check WiFi Fence

SMS *wififencelist*

You will receive a list of the WiFi fences you have set. There are up to 3 fences can be set.

SMS *removefence*#*

If the set WiFi fence number has up to 3, you have to remove at least 1 of them in order to add the new fence. # refers to the WiFi number in the WiFi fence list reply.

Example *removefence*2* means WiFi router in the name of Ken's Office will be removed from the WiFi fence list.

8.2 WiFi Find Me

WiFi find me is an indoor tracking technology. It enables device sending out WiFi signal as a WiFi router via hotspot. And through the app on your smartphone, you are able to get close to the device by detecting device's WiFi signal.

This function is suitable for Android smartphone user only.

SMS *wifispoton*

Device will turn on hotspot function for 10 minutes once receiving the command.

SMS *wifispotoff*

To turn off WiFi find me function.

Please be sure this function is off before using other WiFi function.

8.3 WiFi Data Upload

WiFi Data Upload enables device to upload all location data to the server via WiFi channel instead of GPRS channel.

8.3.1 Set Data Upload WiFi

There are 2 steps to setup a WiFi data upload channel.

Step 1 SMS ***wifilist***

Device will detect WiFi signal nearby and reply a list with wifi router names in order.

eg. 1. Apple's home. 2. Ken's office 3. Bear's Cafe

Step 2 SMS ***wifibind*#*WiFi Password***

Example

refers to the WiFi number in the WiFi list reply.

In the above WiFi list, if 3. WiFi Bear's Cafe is the WiFi you would like to setup for data load, and you know the WiFi password is 654321. The correct command format is ***wifibind*3*654321***. And you will receive a confirmation notice through SMS.

8.3.2 Set Data Upload Channel

System supports 3 types of data upload channels:

GPRS only, WiFi only, WiFi+GPRS. GPRS is the default data upload channel.

After setting the data upload WiFi, you can send a command to switch upload channel to WiFi only or WiFi+GPRS as follows:

SMS ***up*gprs***

System default data upload is via GPRS.

SMS ***up*wifi***

It enables device upload data via WiFi only, if WiFi is not able to be connected, data will be saved in SD (for models support SD storage), and upload again when WiFi is connected.

SMS ***up*mix***

It enables device upload data via WiFi as priority. If the WiFi is not able to be connected, system will turn back to GPRS channel for data upload.

Since WiFi Find Me and WiFi Data Upload can not be used at the same time. Please send *up*gprs*** to switch device back to GPRS upload mode, and then send command **88888888** to reboot the system, before using WiFi Find Me function.**

9. SD Offline Storage

SD offline storage function suitable for models support SD card only. Please check your models number in Hardware Specification to confirm.

Big Buffer

Offline storage enable device to save location data into the SD card when GPRS connection invalid and data will be automatically uploaded to server get connection gets back. This process will be done automatically, no extra command operation is needed.

Logger

Office storage is able to switch the tracking device into a logger for data saving.

Please operate as follows:

- a. Insert a Micro SD card in the SD slot.
- b. Insert a activated SIM into the SIM slot, set all needed function as usual.
- c. Send command `*sdon*` to enable to the offline storage function.
- d. All location data will be saved in the SD card instead of uploading to the server.
- e. Take the SD out of the device, copy the .bin files to your PC.
- f. visit <http://offline.miitown.com/>
- g. Select the data file and click Submit



- h. Click Report to view saved data report. Click Start to view history playback.
- i. Send command `*sdoff*` to end offline storage function.

Note

If you want to take the SIM out of the device after setting all commands, please use an invalid SIM or artificial SIM to replace. Since SIM slot connection is the power switch of the device, a SIM is required to be inserted anyway.

10. Remote Listening

This remote listening function enable master number to call-in and listen to the environmental sound of the device, and device also able to call back when receiving the callback command from master number.

10.1 SMS: `*callin*`

Master number is able to call the device phone number and start listening within 30 minutes after the command is sent.

10.2 SMS: `*callback*`

The device will call the master number when command is received.

11. Status query

SMS: `*status*`

To check device setting status and performance.

12. SOS Alert

SOS Alert function enables device to send SOS alert to preset number when the panic button is triggered.

Up to 3 SOS numbers can be preset.

The registered master number is the default SOS alert number.

12.1 Register the SOS alert number

SMS: [*master*123456*cellphone number 1*cellphone number 2*cellphone number 3*](#)

NOTE: Please make sure country code is included in the cellphone number.

12.2 Panic Button

Power button is the panic button. If there is a SIM card inserted, 2 short presses and 1 long press to trigger SOS alert. Preset numbers will receive the following SOS SMS "SOS! HELP! SOS!! HELP!! SOS!!! HELP!!!" **System default as off.**

SMS: [*soston*](#)

To enable SOS alert function.

SMS: [*sosoff*](#)

To turn off SOS alert function.

13. Low battery Alert

There will be a low battery SMS alert sent to master number when battery drops to 20% of it's capacity, and the routetrack function will be turned off for power saving. And it will resume working when battery is charged. The alert number can be appointed to any other cellphone number if needed.

Appoint low battery alert number

SMS:[*lowbat*alert cellphone number*](#)

Note: Please make sure country code is included in the cellphone number.

Example

lowbat+319876543210*

14. Reboot

SMS: [88888888](#)

Reboot system, previous settings will not be cleared.

15. Master query

SMS: [999999](#)

To check registered master number, password and device's serial number.

16. Default

SMS: **default**

To operate factory default, previous settings will be cleared.

17. Multi Controller

Allows any cellphone number to check the device location and status besides the master number.

17. 1 SMS: ***multiquery***

To enable multi controller function.

17. 2 SMS: ***multiqueryoff***

To turn off the multi controller function.

18. Device Information

SMS: ***about***

To check device information including software edition and serial number.

Command Setting List

Function	Command	Description
APN Settings	*apn*APN's name *username*password*	Enable device to send data to server.
Master Setting	*master*123456*country code (plus) cellphone number*	Register master number.
Password Changing	*password*654321*	Original password is default as 123456. 654321 refers to new password.

Function	Command	Description
Vibration Sensitivity	*sensitive*1-5*	Set motion alert sensitivity, 1 is the most sensitive, 5 is the least
Motion Alert	*alertoff*	End motion alert
	smsalert	Motion alert via SMS
	callalert	Motion alert via Call
Period Motion Alert	*continuousalert*(2 digits start time)*(2 digits end time)	Set period motion alert. The first 2 digitals refers to start time and second 2 digits refers to end time in hour.
	continuousalertoff	End period motion alert function.
Address Query	*locateaddress*	Address information of current location.
Google Map Search	*locatemap*	Google Map link with current location.
Real-time Tracking	*routetrack*1-99*	Device will upload 6 locations every minute. 1-98 represents routetrack data upload interval in hours. 99 represents always on.
Real-time Tracking sampling interval	*rsampling*1-999*	1-999 represents seconds of routetrack sampling interval
Real-time Tracking upload interval	*rupload*1-999*	1-999 represents seconds of routetrack upload interval
Real-time Tracking Off	*routetrackoff*	End routetrack function.
Check Location	*checkm*5-1800*	5-1800 represents minutes of check function data upload interval
	checkoff	End check function

Function	Command	Description
	*checkgsm*5-1800*	5-1800 represents minutes of check gsm function data upload interval
Time Zone	*timezone*0-24*	0-24 represents the timezone number for each country.
Appointed Time Tracking	*timinglocatemap*(appointed locating time)*	Set appointed time tracking. 4 digitals refers to start time and end time in hour. 0830 refers to 08:30am
	timinglocateoff	End appointed time tracking function
Appointed Period Tracking	*periodlocate*(8 digits locating period)	Set appointed period tracking. 8 digitals refers to start time and end time of the period. 08001100 represents 8am-11am
	periodlocateoff	End period locate function
Track Off	*trackoff*	End all the tracking functions.
Upload Alert	*uploadalert*on*	Enable upload alert function
	*uploadalert*off*	End upload alert function
Online Control	*onlineon*	Enable online control function
	onlineoff	End online control function
Deep Sleep	* sleep*1-99*	1-99 represents device wake up interval in hours.
Motion Sleep	* sleepv*	Motion Sleep function with motion alert.

Function	Command	Description
Sleep Off	*sleepoff*	End Deep Sleep function.
Status query	*status*	Check system status.
Multi Controller	*multiquery*	Enable multi controller function.
	multiqueryoff	End multi controller function.
Set WiFi Fence	*wifilist*	Check nearby wifi list.
	wififence##*	Set WiFi fence.
Check WiFi Fence	*wififencelist*	Check WiFi fence list.
	removefence##*	Remove WiFi fence.
WiFi Find Me	*wifispoton*	Enable hotspot.
	wifispotoff	Disable hotspot.
WiFi Data Upload	*wifilist*	Check nearby wifi list.
	wifibind##*WiFi Password*	Bind data upload WiFi
WiFi Upload Channel	*up*gprs*	Data upload via GPRS
	*up*wifi*	Data upload via WiFi
	*up*mix*	Data upload via WiFi +GPRS
Offline Storage	*sdon*	Enable offline storage function

Function	Command	Description
	sdoff	End offline storage function.
Remote Listening	*callin*	Enable call-in listening function for 30 minutes
	callback	Enable call back listening function
SOS Alert	*soston*	Enable SOS alert function.
	sosoff	Disable SOS alert function.
Device Information	*about*	Software edition information and device's serial number.
Reboot	88888888	Reboot the system, previous settings will NOT be cleared.
Master Query	999999	Registered master number information, password and device's serial number.
Low Battery Alert Number	*lowbat*country code (plus) cellphone number*	To set low battery alert number.
Factory Default	default	Default system, previous settings will be cleared.
Power Off	*poweroff*	Power off the device.

Hardware Specifications:

TK SERIES MODEL AND FUNCTION LIST							
Model	Size	Weight	Battery Capacity	SD	WiFi	Remote Listening	Solar
TK053	123mm x 62mm x 31mm	210g	3000mA	N	N	Y	N
TK05	123mm x 62mm x 31mm	227g	5000mA	N	N	Y	N
TK05S	160mm x64mm x 35mm	369g	5000mA	N	N	N	Y
TK10	160mm x64mm x 35mm	369g	10000mA	N	N	Y	N
TK10S	160mm x64mm x 35mm	369g	10000mA	N	N	N	Y
TK15	160mm x64mm x 41mm	465g	15000mA	N	N	Y	N
TK15S	160mm x64mm x 41mm	465g	15000mA	N	N	N	Y
TK20	160mm x64mm x 47mm	569g	20000mA	N	N	Y	N
TK20S	160mm x64mm x 47mm	575g	20000mA	N	N	N	Y
TK05SD	123mm x 62mm x 31mm	227g	5000mA	Y	N	Y	N
TK05SSD	160mm x64mm x 35mm	369g	5000mA	Y	N	N	Y
TK10SD	160mm x64mm x 35mm	369g	10000mA	Y	N	Y	N
TK10SSD	160mm x64mm x 35mm	369g	10000mA	Y	N	N	Y
TK15SD	160mm x64mm x 41mm	465g	15000mA	Y	N	Y	N
TK15SSD	160mm x64mm x 41mm	465g	15000mA	Y	N	N	Y
TK20SD	160mm x64mm x 47mm	569g	20000mA	Y	N	Y	N
TK20SSD	160mm x64mm x 47mm	575g	20000mA	Y	N	N	Y
TK05W	123mm x 62mm x 31mm	227g	5000mA	N	Y	Y	N
TK10W	160mm x64mm x 35mm	369g	10000mA	N	Y	Y	N
TK15W	160mm x64mm x 41mm	465g	15000mA	N	Y	Y	N
TK20W	160mm x64mm x 47mm	569g	20000mA	N	Y	Y	N
TK05SDW	123mm x 62mm x 31mm	227g	5000mA	Y	Y	Y	N
TK05SSDW	160mm x64mm x 35mm	369g	5000mA	Y	Y	N	Y
TK10SDW	160mm x64mm x 35mm	369g	10000mA	Y	Y	Y	N
TK10SSDW	160mm x64mm x 35mm	369g	10000mA	Y	Y	N	Y
TK15SDW	160mm x64mm x 41mm	465g	15000mA	Y	Y	Y	N
TK15SSDW	160mm x64mm x 41mm	465g	15000mA	Y	Y	N	Y
TK20SDW	160mm x64mm x 47mm	569g	20000mA	Y	Y	Y	N
TK20SSDW	160mm x64mm x 47mm	569g	20000mA	Y	Y	N	Y

- GPRS:MTK 6260D
- Quad band; GSM 850/900/1800/1900 MHzAntennae: Internal, GPRS Class 12
- Power: Rechargeable, 700mAh, Lithium-Polymer Battery
- Built-in Vibration/motion sensing
- GPS: U-BLOX G7020-ST, 50 channel
- Antennae: Internal
- Position Accuracy: $\geq 5\text{m}$
- Sensitivity: Tracking: (R)C161 dB, Cold starts: (R)C148 dB, Hot starts: (R)C156 dB
- Cold start:<27s, Warm Start: <5s, Hot Start: 1s
- A-GPS: AssistNow Online and AssistNow Offline services.